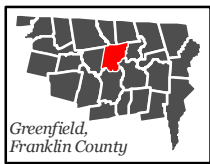
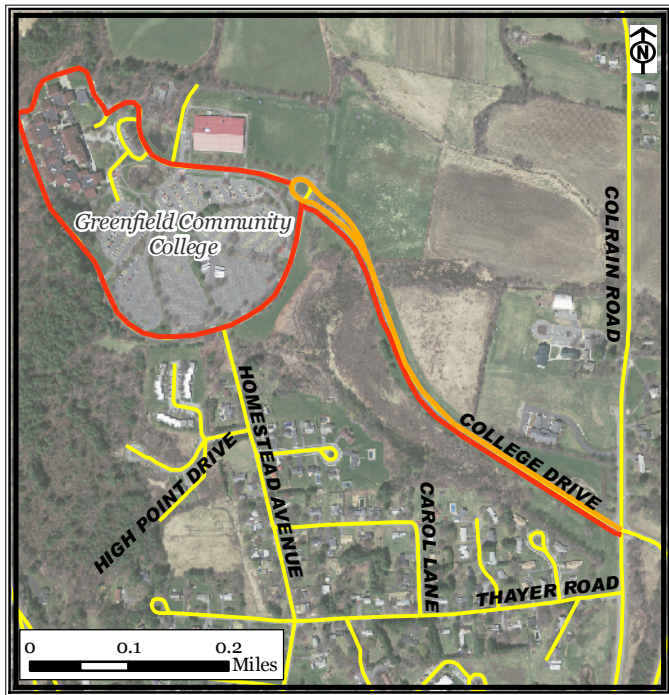


Greenfield Community College Walking Route



Legend

- GCC 1-Mile Route
- GCC 2-Mile Route
- Roads





Part of a set of 28 walking routes in each town of Franklin County. Created for Walk Franklin County - for the Health of It!

**FRANKLIN REGIONAL
COUNCIL OF
GOVERNMENTS**



Greenfield Community College Walking Route, Greenfield

The **GCC 1-Mile Walk** begins at the traffic circle on College Drive, continues to Colrain Road, and then loops back to the circle. There is a sidewalk on this route and it is entirely flat.

The **GCC 2-Mile Walk** combines the GCC 1-Mile Walk and then continues around the campus. First, complete the 1-Mile Walk, then proceed $3/4$ th of the way around the traffic circle and continue along the road which follows the perimeter of the campus parking lots. Continue on this road behind the main building uphill, and around the back of the campus. Going back downhill, go through a small parking lot, and pass the Duck Pond to connect back to the traffic circle.

Note: These routes either follow sidewalks or are entirely paved. The road and parking lots on campus are lit at night. There are emergency call boxes on campus and the college has security personnel on campus 24 hours a day.

For more information on walking in Franklin County visit: www.walkfranklincounty.org

The Franklin Regional Council of Governments, the cities and towns over whose sidewalks and roads you will travel, and the agencies and groups listed on this map are not responsible for your personal safety and in no manner certify the safety of these routes. These routes are suggested only as more suitable than others for travel. All users assume full responsibility for their own safety. This map includes roads that may be private. Please respect the rights of landowners. This map was prepared under contract 56006 in cooperation with the Massachusetts Department of Transportation and the U.S. Department of Transportation, Federal Highway Administration.