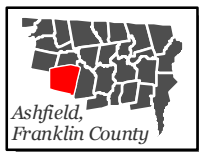
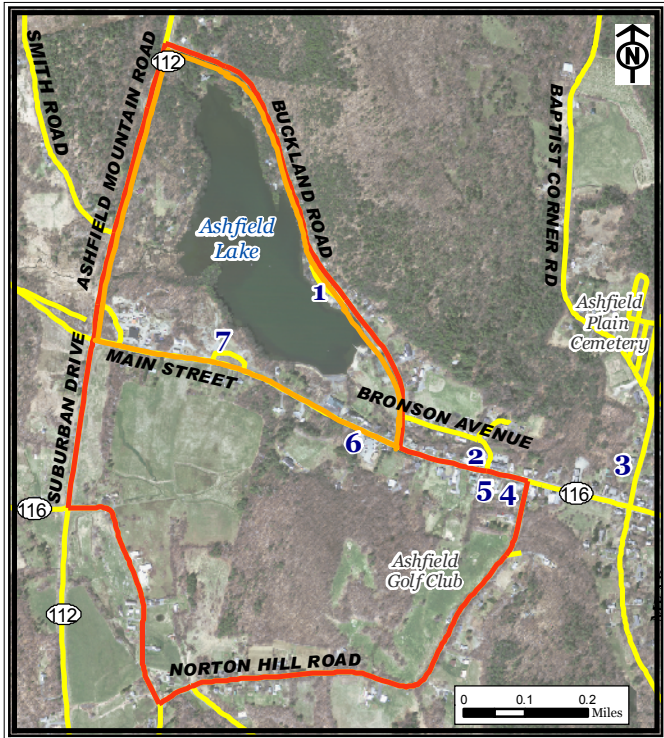


Ashfield Lake Walking Route, Ashfield



Legend

- Ashfield 2-Mile Route
- Ashfield 3-Mile Route
- Roads





Part of a set of 28 walking routes in each town of Franklin County. Created for Walk Franklin County - for the Health of It!

FRANKLIN REGIONAL
COUNCIL OF
GOVERNMENTS



Ashfield Lake Walking Route, Ashfield

The **Ashfield Lake Routes** are composed of two possible walks. The longer walk is 3 miles in length and travels around Ashfield Lake and Norton Hill Road to end back in Ashfield Center. The shorter walk is 2 miles in length and travels directly around Ashfield Lake.

Points of Interest:

1. The Lake House (restaurant) and Public Swimming Beach (parking)
2. Ashfield Hardware and Country Pie Pizza
3. Ashfield Historical Society
4. Elmer's Store (restaurant)
5. Belding Memorial Library
6. Neighbor's Convenience Store
7. Belding Memorial Park

For more information on walking in Franklin County visit:

www.walkfranklincounty.org

The Franklin Regional Council of Governments, the cities and towns over whose sidewalks and roads you will travel, and the agencies and groups listed on this map are not responsible for your personal safety and in no manner certify the safety of these routes. These routes are suggested only as more suitable than others for travel. All users assume full responsibility for their own safety. This map includes roads that may be private. Please respect the rights of landowners. This map was prepared under contract 56006 in cooperation with the Massachusetts Department of Transportation and the U.S. Department of Transportation, Federal Highway Administration.