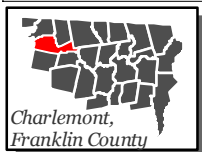
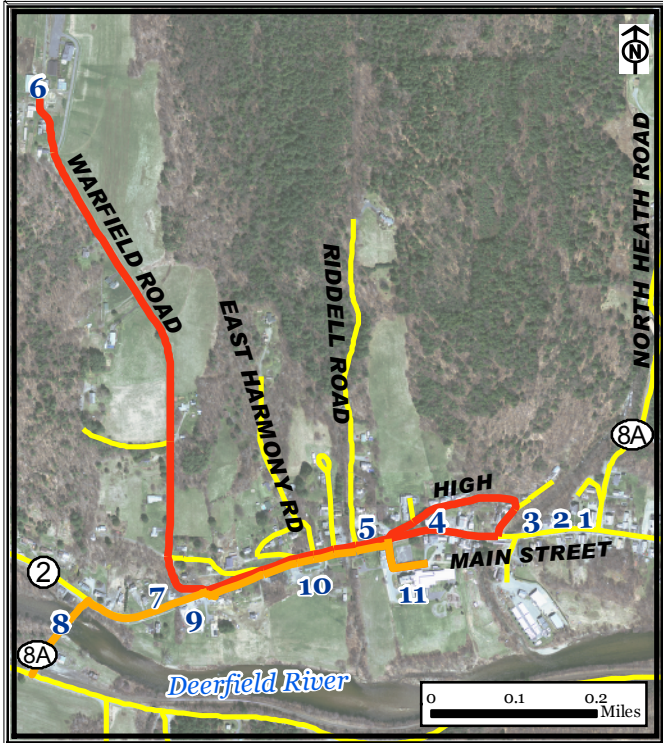


Charlemont Center Walking Route, Charlemont



Legend

- Charlemont 1-mile
- Charlemont 2-mile
- Roads





Part of a set of 28 walking routes in each town of Franklin County. Created for Walk Franklin County - for the Health of It!

**FRANKLIN REGIONAL
COUNCIL OF
GOVERNMENTS**



Charlemont Center Walking Route, Charlemont

The **Charlemont Center Routes** are 1 and 2 miles in length. The 1-mile walk is flat and within the downtown area. It travels past numerous businesses and turns around at the bridge across the Deerfield River with lovely views. The 2-mile walk includes a steep walk up Warfield Road to Warfield House, where you will be rewarded with stunning views of surrounding mountains.

Points of Interest:

1. Country Store
2. Town Hall and Library
3. Convenience Store
4. A.L. Avery and Sons General Store
5. Charlemont Inn (food and lodging)
6. Warfield House (food, lodging, and views)
7. Wine and Spirits
8. Deerfield River Bridge
9. Food, Outdoor Recreational Equipment, Coffee
10. Convenience Store
11. Hawlemont School (parking)

For more information on walking in Franklin County visit: www.walkfranklincounty.org

The Franklin Regional Council of Governments, the cities and towns over whose sidewalks and roads you will travel, and the agencies and groups listed on this map are not responsible for your personal safety and in no manner certify the safety of these routes. These routes are suggested only as more suitable than others for travel. All users assume full responsibility for their own safety. This map includes roads that may be private. Please respect the rights of landowners. This map was prepared under contract 56006 in cooperation with the Massachusetts Department of Transportation and the U.S. Department of Transportation, Federal Highway Administration.