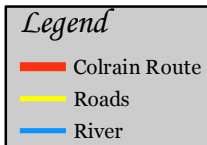
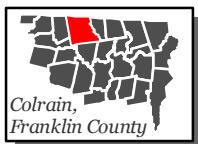
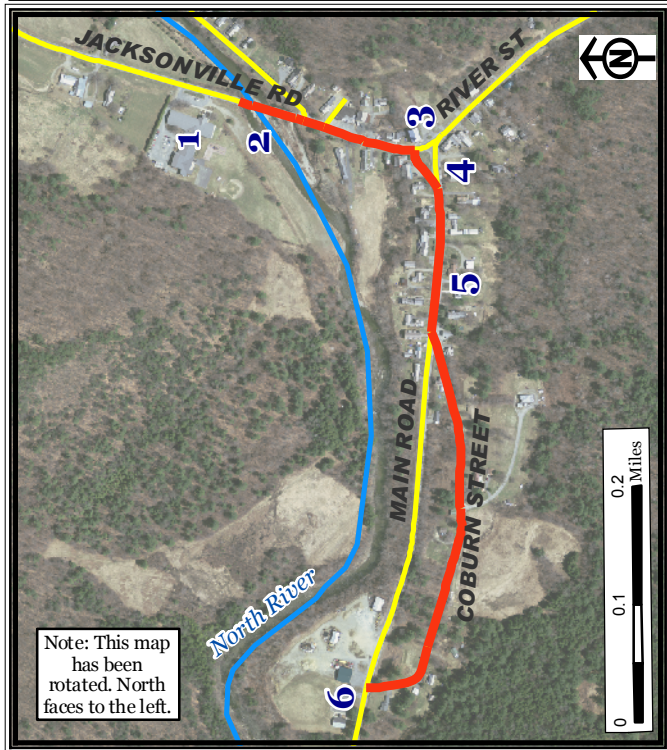


## Colrain Center Walking Route, Colrain





*Part of a set of 28 walking routes in each town of Franklin County. Created for Walk Franklin County - for the Health of It!*

**FRANKLIN REGIONAL  
COUNCIL OF  
GOVERNMENTS**



## Colrain Center Walking Route, Colrain

The **Colrain Center Route** is a 2-mile round trip route that passes through and back the center of Colrain. It begins at the Colrain Central School, goes over the scenic North River, and through the town. Take a left onto Coburn Street (lower speed and volumes). When you reach Main Road, turn back around and return to the school.

### **Points of Interest:**

1. Colrain Central School
2. Scenic Overlook of North River
3. Brick Meeting House
4. Green Emporium Cafe (restaurant)
5. Post Office
6. Colrain Town Hall

*For more information on walking in Franklin County visit: [www.walkfranklincounty.org](http://www.walkfranklincounty.org)*

The Franklin Regional Council of Governments, the cities and towns over whose sidewalks and roads you will travel, and the agencies and groups listed on this map are not responsible for your personal safety and in no manner certify the safety of these routes. These routes are suggested only as more suitable than others for travel. All users assume full responsibility for their own safety. This map includes roads that may be private. Please respect the rights of landowners. This map was prepared under contract 56006 in cooperation with the Massachusetts Department of Transportation and the U.S. Department of Transportation, Federal Highway Administration.