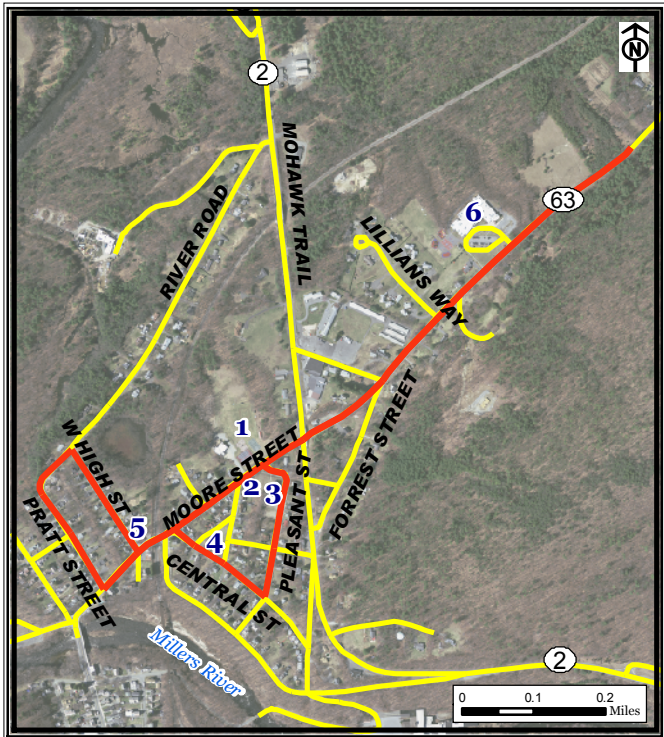


Ervingside Walking Route, Erving



Legend

- Erving Route
- Roads





Part of a set of 28 walking routes
in each town of Franklin County.
Created for Walk Franklin
County - for the Health of It!

FRANKLIN REGIONAL
COUNCIL OF
GOVERNMENTS



Ervingside Walking Route, Erving

The **Ervingside Route** is 2.5-miles in length and travels mostly along Route 63, which has sidewalks and low volumes of traffic.

Points of Interest:

1. Veteran's Memorial Park (parking)
2. Senior Center
3. Library
4. Park Street Park
5. Prondecki's Store (grocery)
6. Erving Elementary School (parking and playground)

*For more information on walking in
Franklin County visit:*

www.walkfranklincounty.org

The Franklin Regional Council of Governments, the cities and towns over whose sidewalks and roads you will travel, and the agencies and groups listed on this map are not responsible for your personal safety and in no manner certify the safety of these routes. These routes are suggested only as more suitable than others for travel. All users assume full responsibility for their own safety. This map includes roads that may be private. Please respect the rights of landowners. This map was prepared under contract 56006 in cooperation with the Massachusetts Department of Transportation and the U.S. Department of Transportation, Federal Highway Administration.