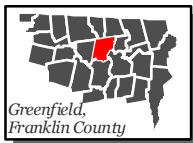
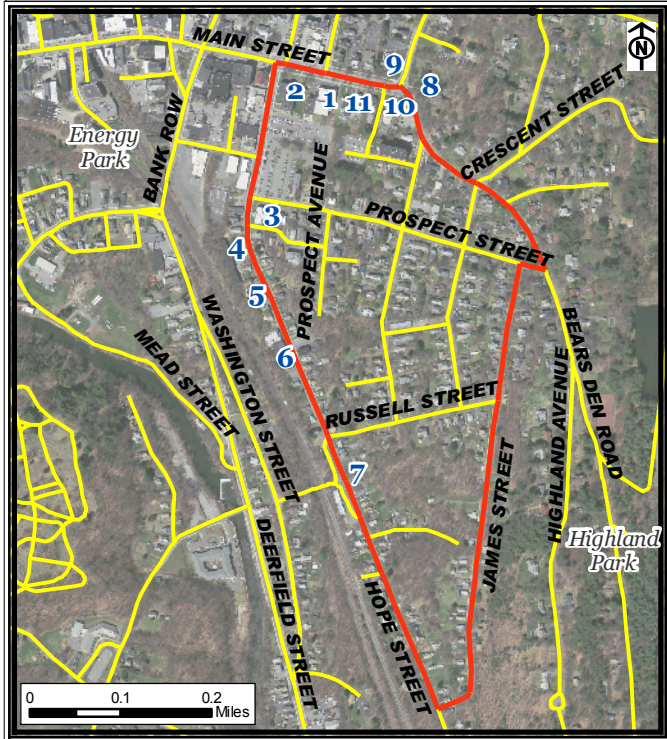


Greenfield Downtown Walking Route, Greenfield



Legend

- Greenfield Downtown Route
- Roads





Part of a set of 28 walking routes in each town of Franklin County.
Created for Walk Franklin County - for the Health of It!

FRANKLIN REGIONAL
COUNCIL OF
GOVERNMENTS



Greenfield Downtown Walking Route, Greenfield

This walking route is 1.7 miles in length. The following points of interest are historic buildings that showcase Greenfield's architectural and commercial history.

Points of Interest:

1. Washburn Memorial (YMCA)
2. Franklin County Courthouse
3. The Armory
4. Cutler, Lyons and Field Shoe Factory
5. St. Paul's Lutheran Church
6. B.B. Noyes Foundry
7. The Toiletine Company
8. Grinnell-Tufts House
9. Gould-Clapp-Potter House
10. Morgan-Allen House
11. Korean Zion Church (oldest church building in Greenfield)

For more information on walking in Franklin County visit: www.walkfranklincounty.org

The Franklin Regional Council of Governments, the cities and towns over whose sidewalks and roads you will travel, and the agencies and groups listed on this map are not responsible for your personal safety and in no manner certify the safety of these routes. These routes are suggested only as more suitable than others for travel. All users assume full responsibility for their own safety. This map includes roads that may be private. Please respect the rights of landowners. This map was prepared under contract 56006 in cooperation with the Massachusetts Department of Transportation and the U.S. Department of Transportation, Federal Highway Administration.