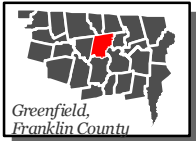
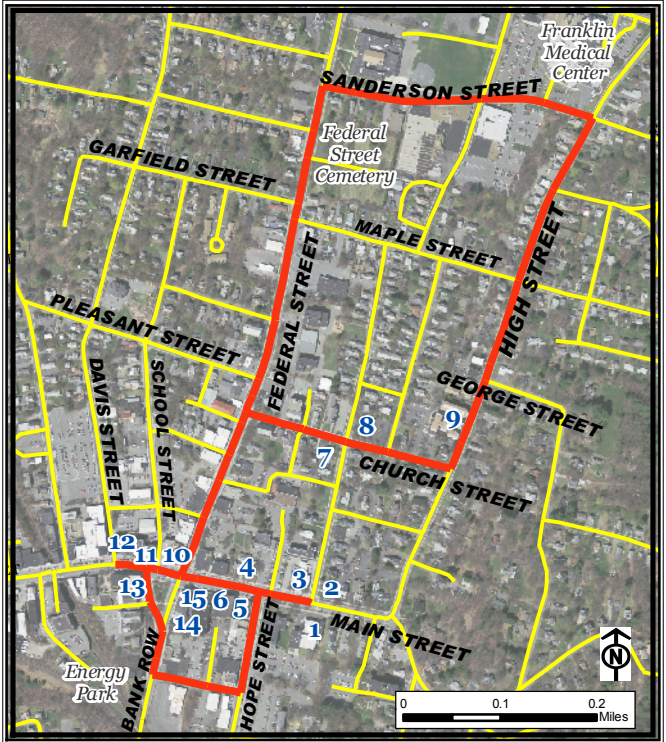


Greenfield Historic Midtown Walking Route



Legend

- Greenfield Historic Midtown
- Roads





*Part of a set of 28 walking routes
in each town of Franklin County.
Created for Walk Franklin
County - for the Health of It!*

**FRANKLIN REGIONAL
COUNCIL OF
GOVERNMENTS**



Greenfield Historic Midtown Walking Route

This walking route is 2.5 miles in length. The following points of interest are historic buildings that showcase Greenfield's architectural and commercial history.

Points of Interest:

1. Washburn Memorial (YMCA)
2. Greenfield Library Association/Arts Council Building
3. U.S. Post Office
4. Leavitt-Hovey House (Library)
5. Masonic Hall
6. Garden Theater
7. Church Street Home
8. Greenfield Historical Society
9. Weldon Hotel
10. Former Franklin Savings Bank
11. Bird-Hovey Building
12. Hollister Block
13. Town Hall
14. First County Court House
15. First National Bank Building

*For more information on walking in Franklin
County visit: www.walkfranklincounty.org*

The Franklin Regional Council of Governments, the cities and towns over whose sidewalks and roads you will travel, and the agencies and groups listed on this map are not responsible for your personal safety and in no manner certify the safety of these routes. These routes are suggested only as more suitable than others for travel. All users assume full responsibility for their own safety. This map includes roads that may be private. Please respect the rights of landowners. This map was prepared under contract 56006 in cooperation with the Massachusetts Department of Transportation and the U.S. Department of Transportation, Federal Highway Administration.