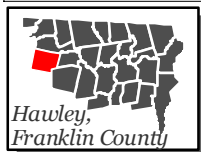
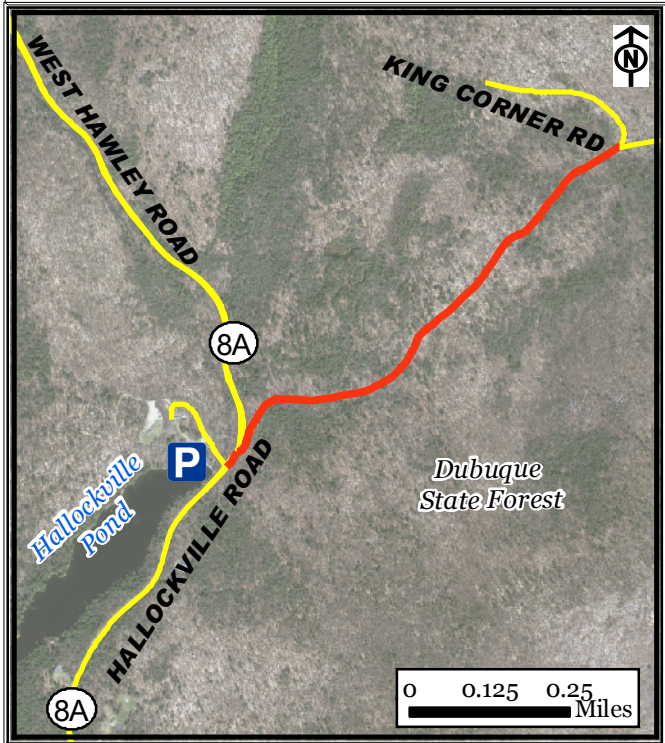





Hallockville Walking Route, Hawley



Legend

-  Hallockville Route
-  Roads
-  Parking





Part of a set of 28 walking routes in each town of Franklin County. Created for Walk Franklin County - for the Health of It!

FRANKLIN REGIONAL
COUNCIL OF
GOVERNMENTS



Hallockville Walking Route, Hawley

The **Hallockville Route** is a 2-mile roundtrip walk beginning across the street (Rt. 8A) from the parking lot next to Hallockville Pond in the Kenneth Dubuque Memorial State Forest. It is a quiet, rural setting, near a base camp for AmeriCorps. The pond and the parking lot can be found off of Route 8A at the Hawley/Plainfield town line. There is ample parking provided, and this area also provides access to numerous other trails in the State Forest. For a free downloadable map of other trails in the area, go to:

<https://www.mass.gov/dcr/parks/western/dubq.htm>.

For more information on walking in Franklin County visit: www.walkfranklincounty.org

The Franklin Regional Council of Governments, the cities and towns over whose sidewalks and roads you will travel, and the agencies and groups listed on this map are not responsible for your personal safety and in no manner certify the safety of these routes. These routes are suggested only as more suitable than others for travel. All users assume full responsibility for their own safety. This map includes roads that may be private. Please respect the rights of landowners. This map was prepared under contract 56006 in cooperation with the Massachusetts Department of Transportation and the U.S. Department of Transportation, Federal Highway Administration.