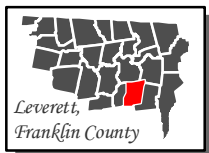
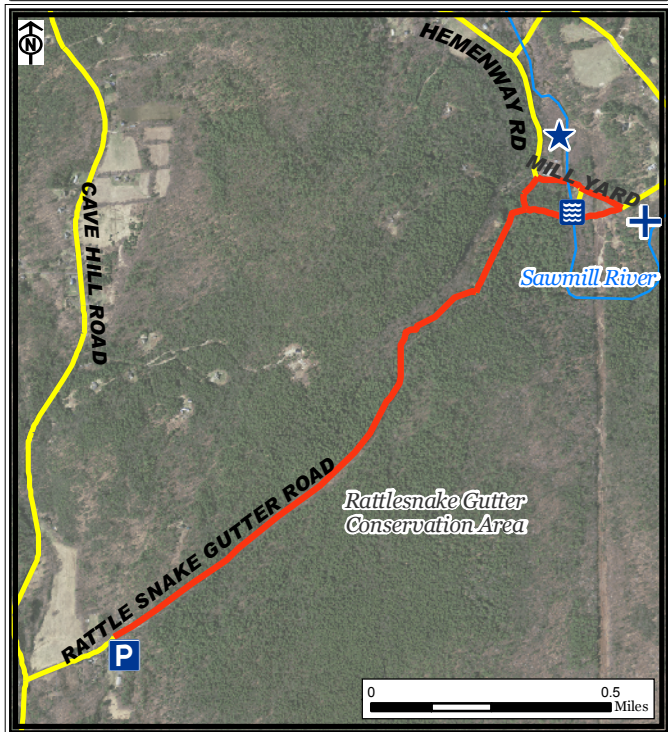


Rattlesnake Gutter Walking Route, Leverett



Legend

-  Rattlesnake Gutter Route
-  Roads
-  Parking





Part of a set of 28 walking routes
in each town of Franklin County.
Created for Walk Franklin
County - for the Health of It!

FRANKLIN REGIONAL
COUNCIL OF
GOVERNMENTS



Rattlesnake Gutter Walking Route, Leverett

The **Rattlesnake Gutter Route** is 3 miles in distance. Park at the yellow road gate 0.2 mile from the intersection of Montague Road. Rattlesnake Gutter Road is a dirt/gravel road and has a modest, continuous uphill rise. There are beautiful rock formations and scenery. At the intersection of Rattlesnake Gutter Road and Mill Yard Road, there are 2 bridges with excellent views of a beautiful small waterfall. This route includes two moderate hills.

Points of Interest:



Old Charcoal Kilns



Cemetery



Sawmill River Waterfall

*For more information on walking in Franklin
County visit: www.walkfranklincounty.org*

The Franklin Regional Council of Governments, the cities and towns over whose sidewalks and roads you will travel, and the agencies and groups listed on this map are not responsible for your personal safety and in no manner certify the safety of these routes. These routes are suggested only as more suitable than others for travel. All users assume full responsibility for their own safety. This map includes roads that may be private. Please respect the rights of landowners. This map was prepared under contract 56006 in cooperation with the Massachusetts Department of Transportation and the U.S. Department of Transportation, Federal Highway Administration.