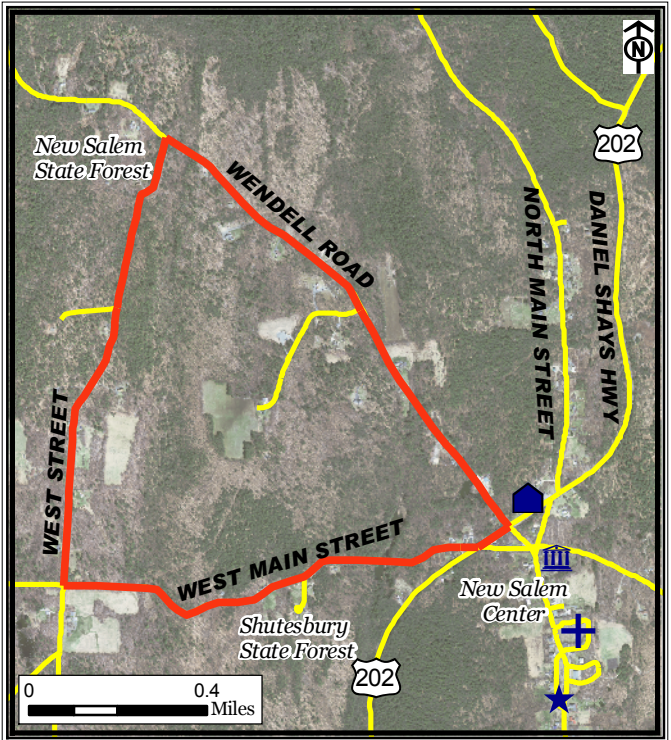

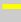


# West New Salem Walking Route, New Salem



*Legend*

-  New Salem Route
-  Roads





Part of a set of 28 walking routes  
in each town of Franklin County.  
Created for Walk Franklin County  
-for the Health of It!





FRANKLIN REGIONAL  
COUNCIL OF  
GOVERNMENTS



## West New Salem Walking Route, New Salem

The **West New Salem Route** is a 3.4-mile route around Poor Farm Hill. It passes through beautiful forests and goes through the New Salem Common Historic District.

### Points of Interest:

-  The *New Salem General Store*
-  The *New Salem Cemetery*
-  The *New Salem Town Hall*
-  The *1794 Meeting House*

*For more information on walking in  
Franklin County visit:*

[www.walkfranklincounty.org](http://www.walkfranklincounty.org)

The Franklin Regional Council of Governments, the cities and towns over whose sidewalks and roads you will travel, and the agencies and groups listed on this map are not responsible for your personal safety and in no manner certify the safety of these routes. These routes are suggested only as more suitable than others for travel. All users assume full responsibility for their own safety. This map includes roads that may be private. Please respect the rights of landowners. This map was prepared under contract 56006 in cooperation with the Massachusetts Department of Transportation and the U.S. Department of Transportation,