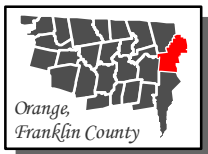
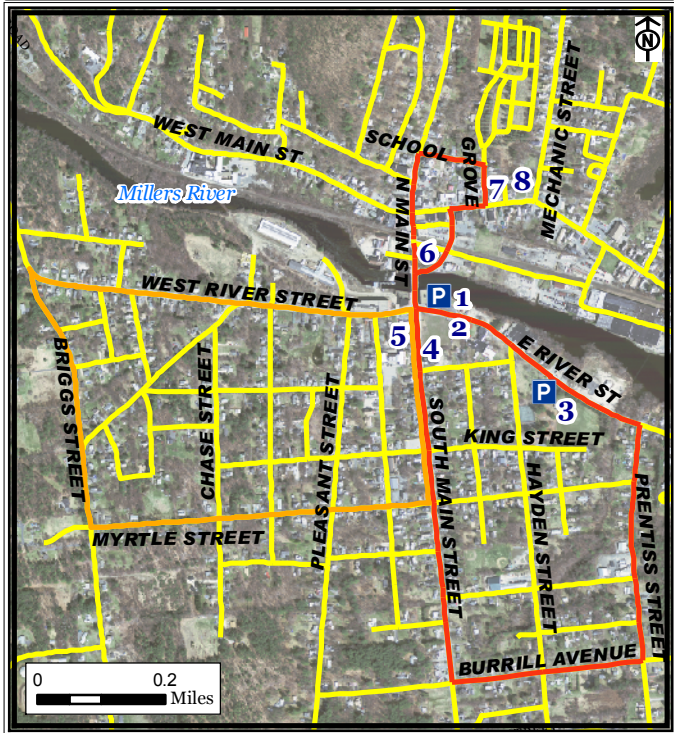


Downtown Orange Walking Route, Orange



Legend

- Orange West Route
- Orange East Route
- Roads
- Parking





*Part of a set of 28 walking routes
in each town of Franklin County.
Created for Walk Franklin County
- for the Health of It!*

**FRANKLIN REGIONAL
COUNCIL OF
GOVERNMENTS**



Downtown Orange Walking Route, Orange

The **Downtown Orange Routes** are each 2 miles in distance roundtrip. They loop around the downtown area - passing historic buildings and mills and follow the Millers River.

Points of Interest:

1. Riverfront Park (parking and canoe launch)
2. Nystrom Blacksmith Shop
3. Butterfield Park (parking)
4. Central Congregational Church
5. Butterfield School
6. Veteran's Memorial Park
7. Wheeler Library
8. Wheeler Mansion

*For more information on walking in
Franklin County visit:*

www.walkfranklincounty.org

The Franklin Regional Council of Governments, the cities and towns over whose sidewalks and roads you will travel, and the agencies and groups listed on this map are not responsible for your personal safety and in no manner certify the safety of these routes. These routes are suggested only as more suitable than others for travel. All users assume full responsibility for their own safety. This map includes roads that may be private. Please respect the rights of landowners. This map was prepared under contract 56006 in cooperation with the Massachusetts Department of Transportation and the U.S. Department of Transportation, Federal Highway Administration.