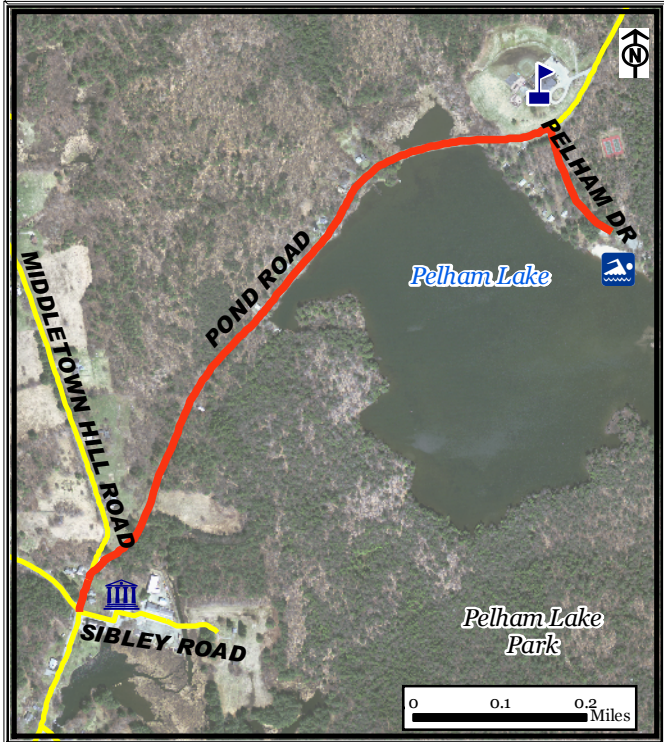


# Pelham Lake Walking Route, Rowe



## Legend

- Rowe Route
- Roads





*Part of a set of 28 walking routes in each town of Franklin County. Created for Walk Franklin County - for the Health of It!*

**FRANKLIN REGIONAL  
COUNCIL OF  
GOVERNMENTS**



## *Pelham Lake Walking Route, Rowe*

The **Pelham Lake Route** is 2 miles roundtrip. It begins in Rowe Center on Sibley Road at the Town Hall and continues along Pond Road. Take a right onto Pelham Lake Drive to reach the Town Beach at the end of the road.

### **Points of Interest:**



*Town Hall*



*Rowe Elementary School*



*Town Beach*

*For more information on walking in  
Franklin County visit:*

*[www.walkfranklincounty.org](http://www.walkfranklincounty.org)*

The Franklin Regional Council of Governments, the cities and towns over whose sidewalks and roads you will travel, and the agencies and groups listed on this map are not responsible for your personal safety and in no manner certify the safety of these routes. These routes are suggested only as more suitable than others for travel. All users assume full responsibility for their own safety. This map includes roads that may be private. Please respect the rights of landowners. This map was prepared under contract 56006 in cooperation with the Massachusetts Department of Transportation and the U.S. Department of Transportation, Federal Highway Administration.