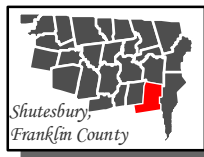
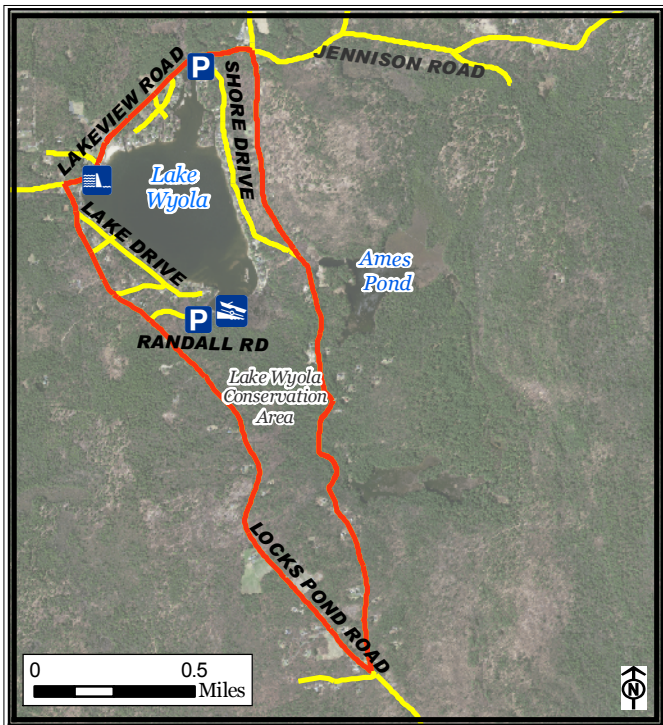


Lake Wyola Walking Route, Shutesbury



Legend

- Lake Wyola Route
- Roads
- Parking





*Part of a set of 28 walking routes
in each town of Franklin County.
Created for Walk Franklin County
- for the Health of It!*

**FRANKLIN REGIONAL
COUNCIL OF
GOVERNMENTS**



Lake Wyola Walking Route, Shutesbury

The **Lake Wyola Walk** is 4.8 miles in distance. It begins at the Lake Wyola Association Hall at the intersection of Lakeview Road and Shore Drive. The route then continues south on Wendell Road (which is gravel) until it turns right onto Lockes Pond Road. This road will lead you back to Lakeview Drive. The second half of the walk is downhill.

Points of Interest:



Lake Wyola Dam can be seen from Lockes Pond Road near the intersection with Lakeview Drive.



Boat Launch is located at the end of Randall Road and has parking and bathroom facilities.

For more information on walking in Franklin County visit: www.walkfranklincounty.org

The Franklin Regional Council of Governments, the cities and towns over whose sidewalks and roads you will travel, and the agencies and groups listed on this map are not responsible for your personal safety and in no manner certify the safety of these routes. These routes are suggested only as more suitable than others for travel. All users assume full responsibility for their own safety. This map includes roads that may be private. Please respect the rights of landowners. This map was prepared under contract 56006 in cooperation with the Massachusetts Department of Transportation and the U.S. Department of Transportation, Federal Highway Administration.