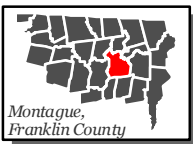
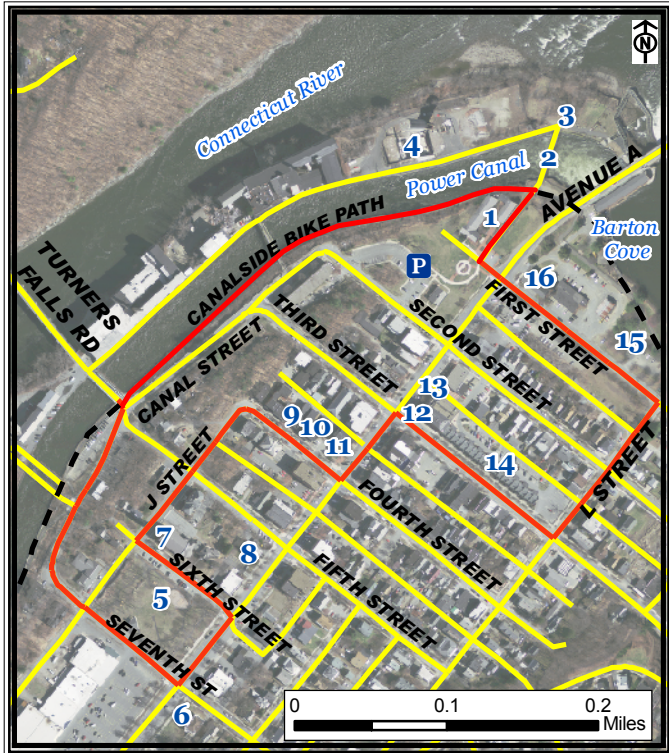


Turners Falls Walking Route, Montague



Legend

- Turners Falls Route
- Roads
- Canalside Bike Path
- P Parking





Part of a set of 28 walking routes
in each town of Franklin County.
Created for Walk Franklin County
- for the Health of It!

FRANKLIN REGIONAL
COUNCIL OF
GOVERNMENTS



Turners Falls Walking Route, Montague

This route is 1.5 miles roundtrip and partially travels along the Canalside Trail Bike Path. The following points of interest are historic buildings that showcase Turners Falls' architectural and commercial history.

Points of Interest:

1. Great Falls Discovery Center (parking)
2. Power Canal
3. Fish Ladder
4. Mill Buildings
5. Peskeomskut Park
6. Carnegie Library
7. St. Anne Church
8. Bank Building
9. Old Police Station
10. American House
11. Spinner Park
12. Colle Opera House
13. Shea Theater
14. Cutlery Block
15. Unity Park
16. Turners Falls Co (Town Hall)

For more information on walking in Franklin County visit: www.walkfranklincounty.org

The Franklin Regional Council of Governments, the cities and towns over whose sidewalks and roads you will travel, and the agencies and groups listed on this map are not responsible for your personal safety and in no manner certify the safety of these routes. These routes are suggested only as more suitable than others for travel. All users assume full responsibility for their own safety. This map includes roads that may be private. Please respect the rights of landowners. This map was prepared under contract 56006 in cooperation with the Massachusetts Department of Transportation and the U.S. Department of Transportation, Federal Highway Administration.