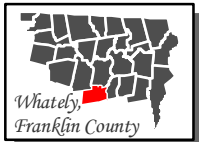
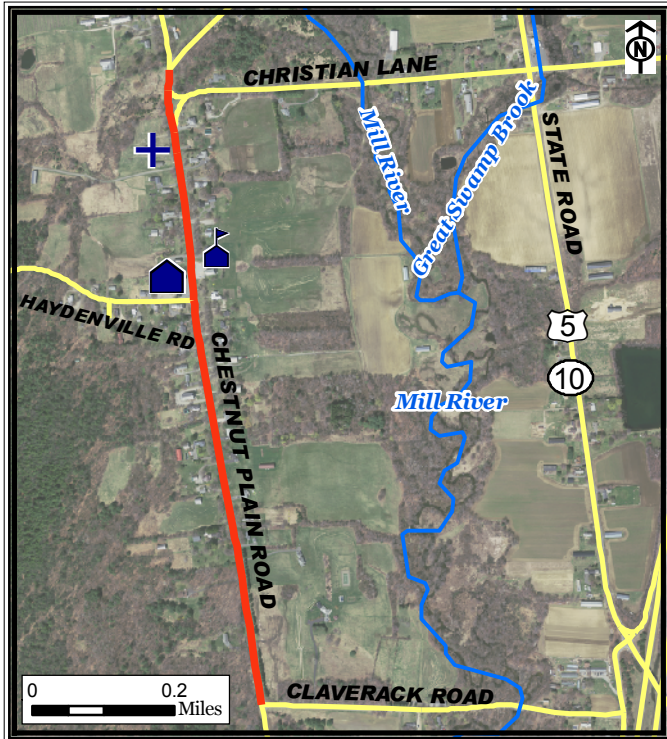


# Whately Center Walking Route, Whately



*Legend*

- Whately Center Route
- Roads
- River





Part of a set of 28 walking routes in each town of Franklin County.  
Created for Walk Franklin County - for the Health of It!

FRANKLIN REGIONAL  
COUNCIL OF  
GOVERNMENTS



## Whately Center Walking Route, Whately

The **Whately Center Route** is a 2-mile roundtrip route on Chestnut Plain Road. It is located in the historic Whately Center and passes many beautiful buildings, including the historic Whately Inn. The route also has wonderful views of the Connecticut River Valley to the east.

### Points of Interest:



The *Whately Inn*



The *Center Cemetery*



The *U.S. Post Office Building*

For more information on walking in Franklin County visit: [www.walkfranklincounty.org](http://www.walkfranklincounty.org)

The Franklin Regional Council of Governments, the cities and towns over whose sidewalks and roads you will travel, and the agencies and groups listed on this map are not responsible for your personal safety and in no manner certify the safety of these routes. These routes are suggested only as more suitable than others for travel. All users assume full responsibility for their own safety. This map includes roads that may be private. Please respect the rights of landowners. This map was prepared under contract 56006 in cooperation with the Massachusetts Department of Transportation and the U.S. Department of Transportation, Federal Highway Administration.